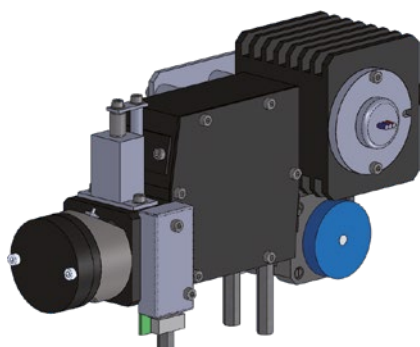


THE S 3255 UV/VIS DETECTOR

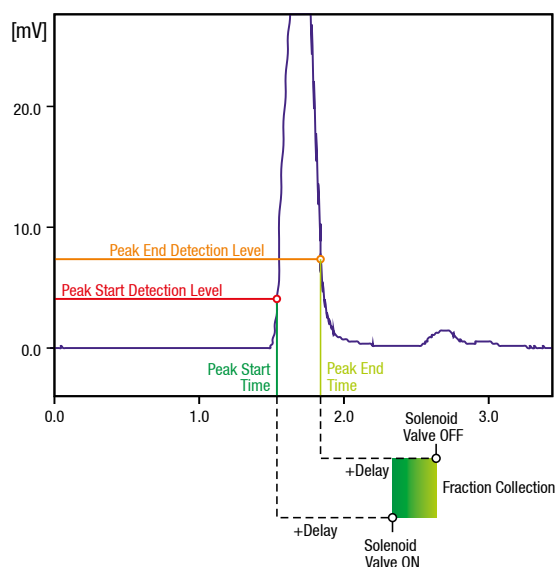


The Sykam S 3255 UV/Vis Detector is a single or optional dual channel variable wavelength detector with a wavelength range of 190 to 800 nm. Built around a high quality “moving monochromator” optics for minimal loss of light energy at any chosen wavelength, the result is a UV/Vis detector with an excellent dynamic measuring range and stability for routine applications as well as demanding preparative HPLC applications.



An integrated wavelength program allows for free programming of different wavelengths within a run. A special feature of the S 3255 is the integrated peak detector with the possibility of direct control of external solenoid valves by means of an integrated 24 volt output stage with a programmable delay function. Just adding an automatic three-way valve from the Sykam S 6000 series allows for fraction collection or solvent recycling.

The preparative flow cell is available in stainless steel and in PEEK versions.



Variable Wavelength UV/Vis Detector S 3255

Catalog No.	Description	Specifications
S009155	UV/Vis Detector S 3255 1-Channel without flow cell	190 - 800 nm
S009172	UV/Vis Detector S 3255 2-Channel without flow cell	190 - 800 nm; second measuring channel
S007050	Preparative Flow Cell, PEEK	1/8", 0.5mm path length, 350 bar
S007398	Preparative Flow Cell, stainless steel	1/8", 0.5mm path length, 400 bar

Technical Specifications

Injection accuracy	± 2 %
Injection precision	≤ 0.1 %
Wetted materials	PVC, PTFE, stainless steel/PEEK, PPS
Max. pressure	350 / 400 bar (PEEK / stainless steel)

Operation	Manual, RS232, digital I/O
Digital I/O	
Dimensions	383 x 165 x 460 mm
Weight	10.6 kg
Power supply	100 - 240 V, 50 - 60 Hz

THE S 3355 UV/VIS PHOTO DIODE ARRAY DETECTOR



If a standard one or two channel UV/Vis detector is not adequate for preparative purifications, a diode array detector offers simultaneous multi-wavelength or full UV/Vis spectrum - peak purity - analysis for complex chromatographic purifications.

The Sykam S 3355 PDA Detector is a photo diode array detector with a deuterium and a tungsten lamp, offering a wavelength range of 190 nm to 720 nm with the 256 diodes version, or 190 nm to 1040 nm with the 1024 diodes version. The front-mounted flow cell with a high flow rate rating and a high pressure rating of up to 400 bar allows easy access with standard 1/8" fittings.

Photo-Diode-Array (PDA) Detector S 3355

Catalog No.	Description	Specifications
S000172	PDA Detector S 3350 without flow cell	256 diodes, 190 - 720 nm
S011282	Preparative Flow Cell, PEEK	1/8", 0.5mm path length, 350 bar
S009787	Preparative Flow Cell, stainless steel	1/8", 0.5mm path length, 400 bar

Technical Specifications

Injection accuracy	± 2 %
Injection precision	≤ 0.1 %
Wetted materials	PVC, PTFE, stainless steel/PEEK, PPS
Max. pressure	350 / 400 bar (PEEK / stainless steel)

Operation	Manual, RS232, digital I/O
Digital I/O	
Dimensions	383 x 165 x 460 mm
Weight	10.6 kg
Power supply	100 - 240 V, 50 - 60 Hz